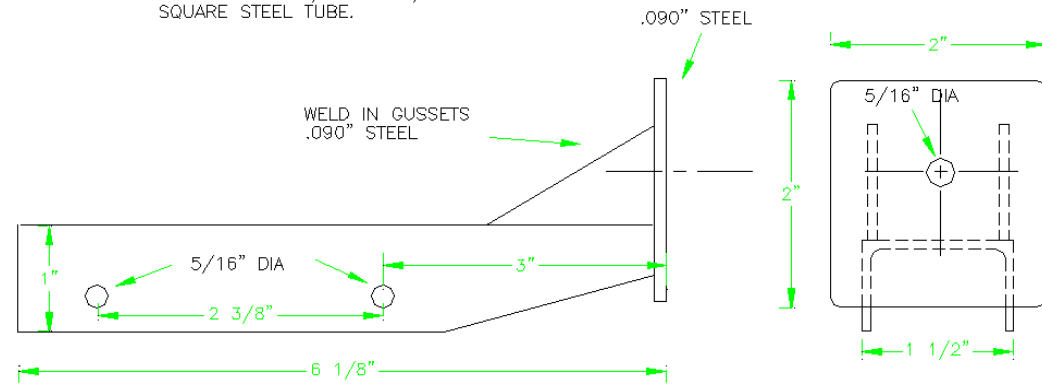
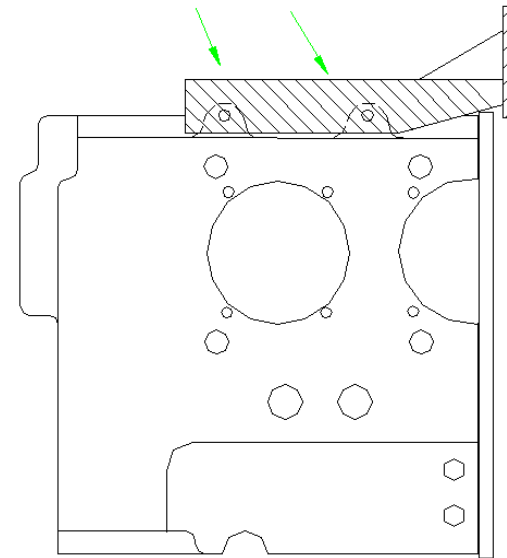


TOP ENGINE BRACKET

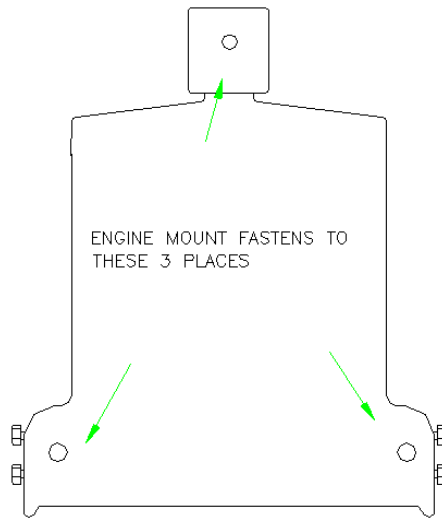
MAKE FROM 1 1/2" x 1 1/2" x .090" SQUARE STEEL TUBE.



DRILL THE HOLES TO LINE UP WITH THE HOLES IN THE TOP FLANGE OF THE CRANKCASE. SOME FILING OF THE LUGS WILL BE NECESSARY.

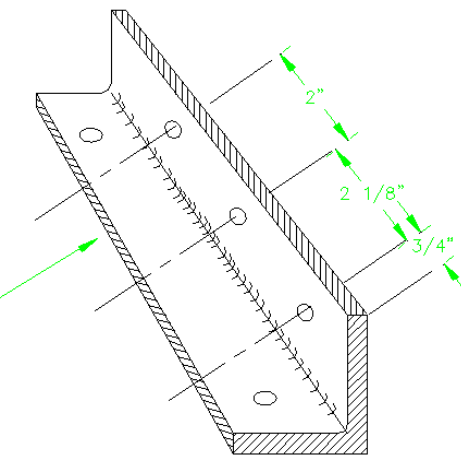
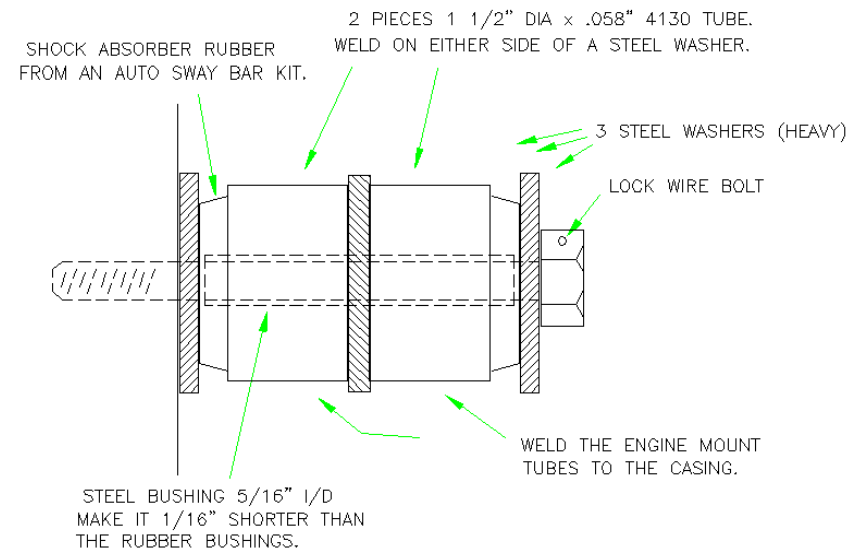


ENGINE MOUNT FASTENS TO THESE 3 PLACES



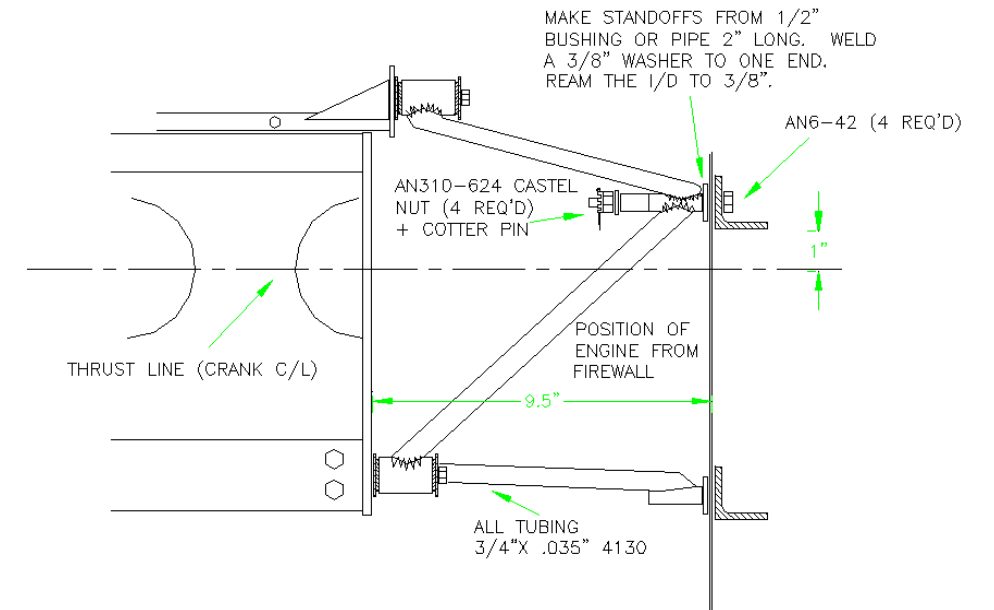
ENGINE RUBBER SHOCK MOUNTS

MAKE FROM 1 1/2" x 1 1/2" x .090" SQUARE STEEL TUBE.

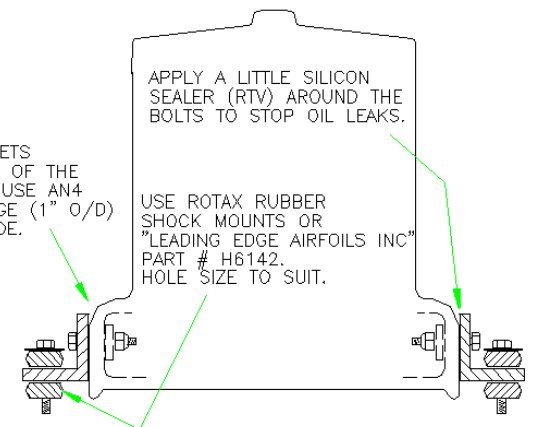
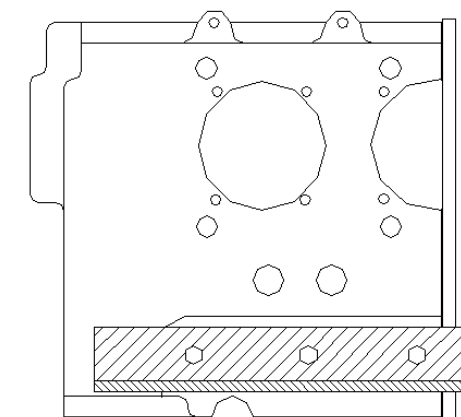


MAKE TWO BRACKETS FROM 1 1/2" x 1 1/2" x 1/8", 6061-T6 ANGLE.

ENGINE MOUNT EXAMPLE FOR A HUMMELBIRD



ALTERNATE ENGINE MOUNT (BEDMOUNT) FOR MINIMAX ETC.



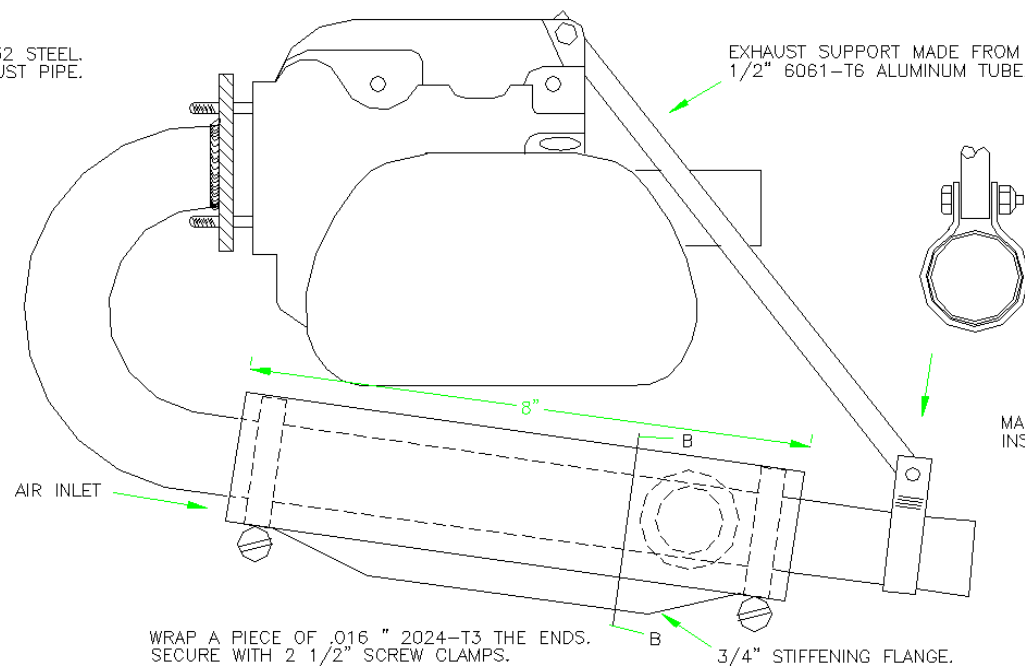
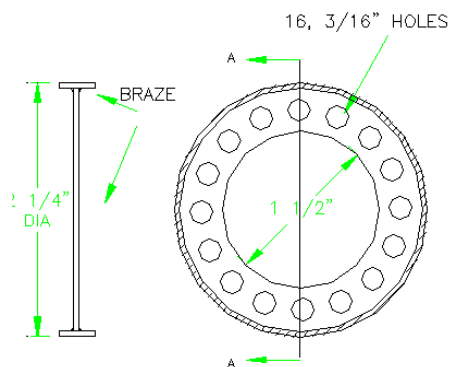
HEAT MUFF

FOR CARB HEAT & CABIN HEAT

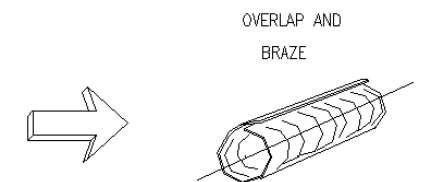
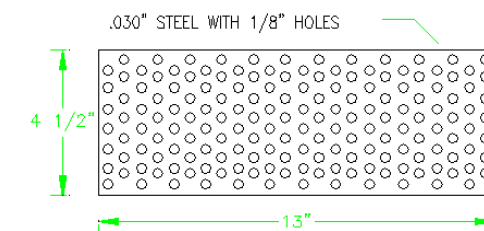
HEAT MUFF ENDS

MAKE 4, 2 WITH HOLES & 2 WITHOUT. INNER RING & OUTER BAND MADE FROM .032 STEEL. BRAZE THE ENDS IN PLACE ON THE EXHAUST PIPE.

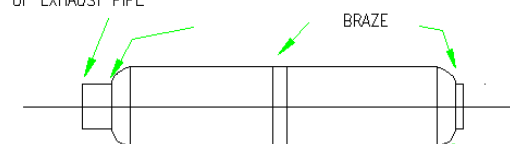
SEC A-A



OPTIONAL MUFFLER



USE A SCREW CLAMP TO FASTEN TO END OF EXHAUST PIPE



FIBREGLASS (HOME INSULATION TYPE) CAN BE PLACED BETWEEN THE PERF TUBE & OUTER SHELL

1/2 VW ENGINE	
- CARB HEAT MUFF - ENGINE MOUNT DETAILS	
DRAWN BY: W. SPRING REV. SEP 2002	SHEET 5